

CATEGORIES

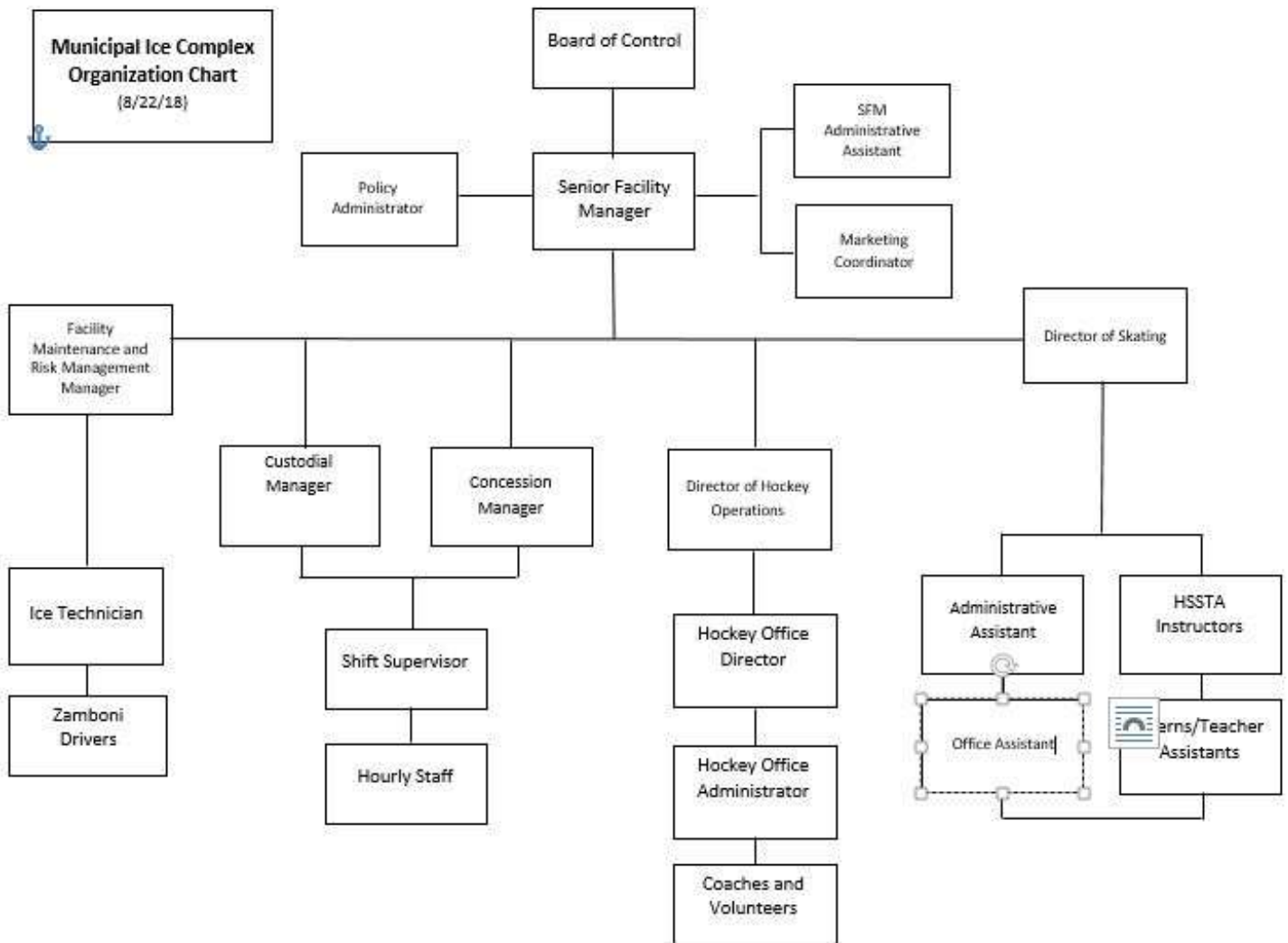
DATE PROPOSED: 8/10/18

DATE OF VOTE: 8/22/18

ACCEPT (Y/N): Y

In all the policies of the Municipal Ice Complex (MIC), the employees are expected to take directives, get permission, or pre-approval from the Senior Facility Manager (SFM). When the employee is the SFM, the directives, permission, or pre-approval are to come from the President of the Board of Control.

Reporting relationships are further defined by the organizational chart:



COMMENTS: